

'Joyce Stick' has local connection

LOCKPORT JOURNAL

Everyone knows what a joy stick is. But not many people know that the device used on everything from video games to airplanes started out being called a "Joyce stick" and that it has a strong Lockport connection.

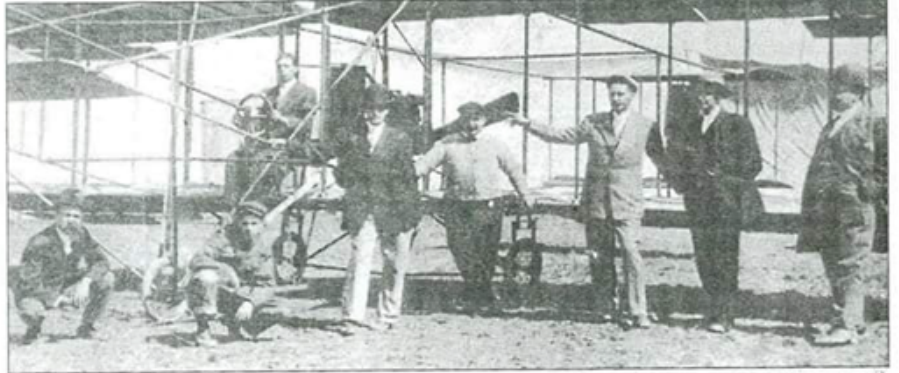
The device was originally developed by James Henry Joyce, father-in-law Lockport resident Howard Roth.

Roth recently sent information about Joyce and his invention to the Smithsonian National Air and Space Museum, the State Historical Museum of Missouri and Wings of Eagles in Horseheads.

Joyce was born in Jackson, Mo., on Jan. 6, 1887. An inventor, he came up with the Joyce Stick by combining two aircraft controls — the elevator and ailerons. For the device, which has been in use ever since, he was paid \$400 and forfeited all rights to design.

The aircraft Joyce originally made the Joyce Stick for was a Model D Pusher. Joyce was hired to design the control because of his mechanical innovative ability, and was not involved in flight before or after the invention.

Roth said much of the information about the Joyce Stick came from the late Carlton Loberg, Joyce's brother-in-law,



CONTRIBUTED PHOTO

ANTIQUE: This photo, taken in about 1907 in southeastern Missouri, shows James Henry Joyce sitting at the controls of an antique aircraft. He is credited with developing the "Joyce Stick," which later became known as a "joy stick" and is still in use today.

who spent a great deal of time tracing the information.

Joyce, who died on Oct. 22, 1978, also invented a steam plow and various other small tools.

Roth also has ties to aviation. During World War II, he took

primary flight training at Cape Girardeau, Mo. It was there that he met Erna Fae Joyce, Joyce's daughter. The couple later married.

After completing his cadet training and earning his wings,

Roth was assigned to the 8th Air Force, and completed many combat missions as a B-17 pilot.

Roth later became a developer of residential subdivisions in the Town of Lockport.